

# Eliminating problematic odor and mold in hospitality



# Persistent odors negatively affect your guest's experience.

In hospitality environments with smoking areas or humid climates, guest satisfaction can be disrupted by smoke odors, mold, and mildew, detracting from the ambiance and cleanliness standards crucial for a positive and memorable guest experience. The scent of smoke permeates fabrics, creating an unpleasant atmosphere. Guests may find it unappealing, leading to shorter stays and reduced loyalty. Mold and mildew emit unpleasant smells and can compromise indoor air quality, triggering allergies and respiratory issues for guests.

Pyure Dynamic Protection® delivers effective, rapid odor mitigation by neutralizing bacteria, mold, and other source compounds. Not only are the odors reduced, but the air and surfaces are purified and cleaned, creating a healthier indoor environment.

**Pyure treats pathogens and pollutants that cause odor issues in hospitality:**



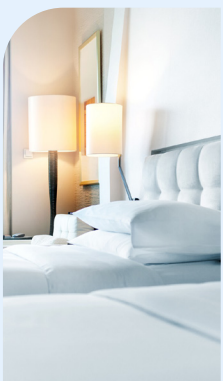
## Facilities permitting smoking

- Casinos and other gaming facilities
- Smoking rooms
- Cigar lounges



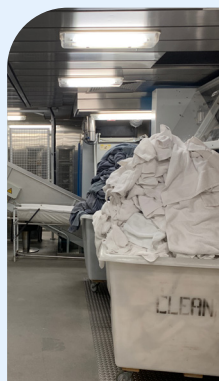
## Humid environments

- Tropical resorts
- Cruise ships
- Mitigate mold spread
- Mustiness in common areas



## Guest rooms

- Tobacco odor
- Cannabis odor
- Biological odor



## Other applications

- Laundry facilities
- Garbage rooms
- Fitness centers
- Fire remediation
- Forest fire smoke



# Replicating nature to deliver safe and effective cleaning.

Pyure produces the same natural cleansers present outdoors in the same concentrations — ensuring effective purification of air and cleaning of surfaces in occupied spaces.

Pyure treats odor-causing pathogens & pollutants:

Cigarette & cigar smoke

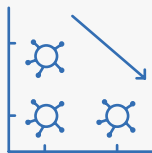
Mold, fungus & bacteria

Rotting & fermenting waste

Volatile organic compounds (VOC)

Smoke odor from fires

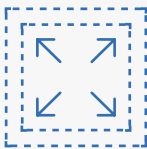
## How Pyure works:



Provides superior performance in reducing microbial loads in the air and on surfaces.



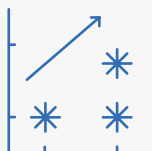
Runs continuously 24/7 while treated spaces are occupied.



Treats any size space with the same efficacy.



Delivered through an existing air handling system or installed as a stand alone solution.



Increases the effectiveness of existing cleaning and sanitation protocols, and HVAC systems.



# Proven to reduce airborne pollutants.

Controlled atmospheric studies assessed the impact of Pyure on VOCs and the possible accumulation of chemical intermediates.

TVOC reduction  
after 15 hours:

↓ 59%

No accumulation of intermediates  
above background levels, including:

- Formaldehyde
- Acetaldehyde
- Other aldehydes

Pyure has demonstrated significant  
reductions of other airborne  
pollutants in real-world settings:

- Nicotine
- Chemical produced by fires
- Ethylene



# Case studies

## Large smoking casino

### Problem

A large casino in a hot and humid climate was concerned about microbial contamination. The risk of COVID-19 infection was also prevalent, and there was a need to proactively clean the casino, reassure patrons, and provide a better guest experience. An independent testing lab was brought in to take air and surface samples, and they found elevated mold, bacteria and nicotine in the air and on surfaces.

### Pyure impact

A Pyure controlled solution was installed into the air handling system's ductwork to treat the entire casino. After five weeks of operation, the independent lab returned and took the air and surface samples again. Results showed significant reductions in the quantity of mold, bacteria, and nicotine in the air and on surfaces. The air also smelled fresher, and both staff and patrons commented on the clean smell and absence of cigarette smoke and smell.

### Customer benefit

The casino communicated to guests the steps taken to provide them with a cleaner, safer environment. These results and the fresher-smelling casino led to increased traffic and longer stays, generating more revenues for the casino and a better guest experience. Employees also reported fewer breathing related problems due to the absence of cigarette smoke.

Watch this customer's video testimonial:

[pyure.com/ChurchillDowns-video](https://pyure.com/ChurchillDowns-video)



## Cigar lounge

### Problem

A high-end cigar lounge with an exclusive clientele had a severe problem with cigar smoke and odors. Despite using HEPA + activated carbon filters, patrons and employees frequently complained. Patrons found the smoke and odor excessive, staff found working conditions difficult, and their clothes also had strong odors at the end of their shifts.

### Pyure impact

Pyure units were deployed, and the HEPA + activated carbon units were turned off. Staff noticed an immediate impact. Within a few days, the lounge smelled fresh in the morning, with no residual cigar smell. During the day, the cigar odor and smoke levels were significantly reduced relative to the performance of the HEPA and activated carbon filters.

### Customer benefit

Employees no longer had the smell of smoke at the end of their shifts, and certain employees with breathing and asthma problems no longer had to use their medication. The lounge saved over \$10,000 in annual HEPA + activated carbon filter replacement costs and saw a reduction in energy consumption. The payback for the Pyure solution was less than 6 months, resulting in a considerably more hospitable environment for patrons and staff.



# Case studies

## Tropical resort

### Problem

A luxury resort on a Caribbean island had 170 hotel suites rented at high prices. Despite extensive cleaning protocols and high occupancy rates, the rooms would develop a musty, moldy smell that negatively impacted guest experiences. The resort would have to keep the rooms empty periodically to remediate the odors, and the persistent odors negatively impacted the resort's ability to charge premium rates.

### Pyure impact

Small units were placed in each of the suites, and in the weeks that followed, the resort workers noticed that the musty, mildew odors were eliminated, and guests began commenting on the “freshness” of the suites.

### Customer benefit

The resort shortened turnaround times between guests and was able to charge higher prices for the suites due to the high level of guest satisfaction. The higher revenues generated a rapid payback on the Pyure devices, and the resort has continued to use the Pyure units since, ordering replacement UV optics each year.



## Cruise ship

### Problem

A large cruise ship permitted smoking in its casino and bar, which were located in close proximity to other decks frequented by families and non-smokers. Banning smoking was not an option, given its expected impact on casino and bar revenues. Still, the cruise ship was experiencing a significant number of complaints on each cruise from non-smokers.

### Pyure impact

A Pyure controlled solution was installed into the air handling system supplying air to the casino and bar areas. The cruise ship experienced a significant drop in the number of complaints, and both guests and staff found the casino to be “fresher” smelling, with no cigarette odors.

### Customer benefit

The cruise ship saw revenues from the casino and bar increase significantly, and the overall guest experience on adjacent decks was markedly improved, leading to higher guest satisfaction. The incremental revenues paid for the Pyure system in under 6 months.



# Case studies

## Garbage storage & compacting room - Office

### Problem

An office building with a centralized garbage room had strong odors permeating the building, causing tenants to complain. An air conditioning system installed in the garbage room had cost over \$4,000 per year in energy consumption, with limited impact on garbage odors.

### Pyure impact

Pyure units were installed in the garbage room, and the air conditioning units were turned off. Within a week, there was a noticeable reduction in odor, and after three weeks, the odors were mitigated, and the tenant's complaints ceased.

### Customer benefit

The building owner generated a better experience for tenants and eliminated odor complaints. The savings in energy consumption paid for the Pyure solution in less than a year and helped to protect the rental value of the building.



## Retail store with fire damage

### Problem

A 150,000 square foot retail store had a fire in the adjacent warehouse that generated much smoke, resulting in the merchandise on the retail floor and warehouse having a strong "burning" odor. Initial remediation quotes called for a 30 day closure of the store (\$900,000 in lost sales per day) and the disposal of \$8 million in non-recoverable inventory.

### Pyure impact

The store used large Pyure MVP48 units to treat the main space and portable XL3 units to treat specific inventory items within an area with greater damage. After 36 hours of continuous treatment, the odor was largely mitigated, and the store could open to the public and resume operations. All of the inventory was recovered.

### Customer benefit

The retailer limited the revenue losses to under \$2M, far less than the \$27M in lost revenue that would have resulted from a 30 day closure. The company also saved several million dollars in recovered inventory. With Pyure, the outlet was able to open within 36 hours and continue to operate the Pyure technology in the presence of shoppers, running for a total of 10 days to remove the odors completely and permanently.



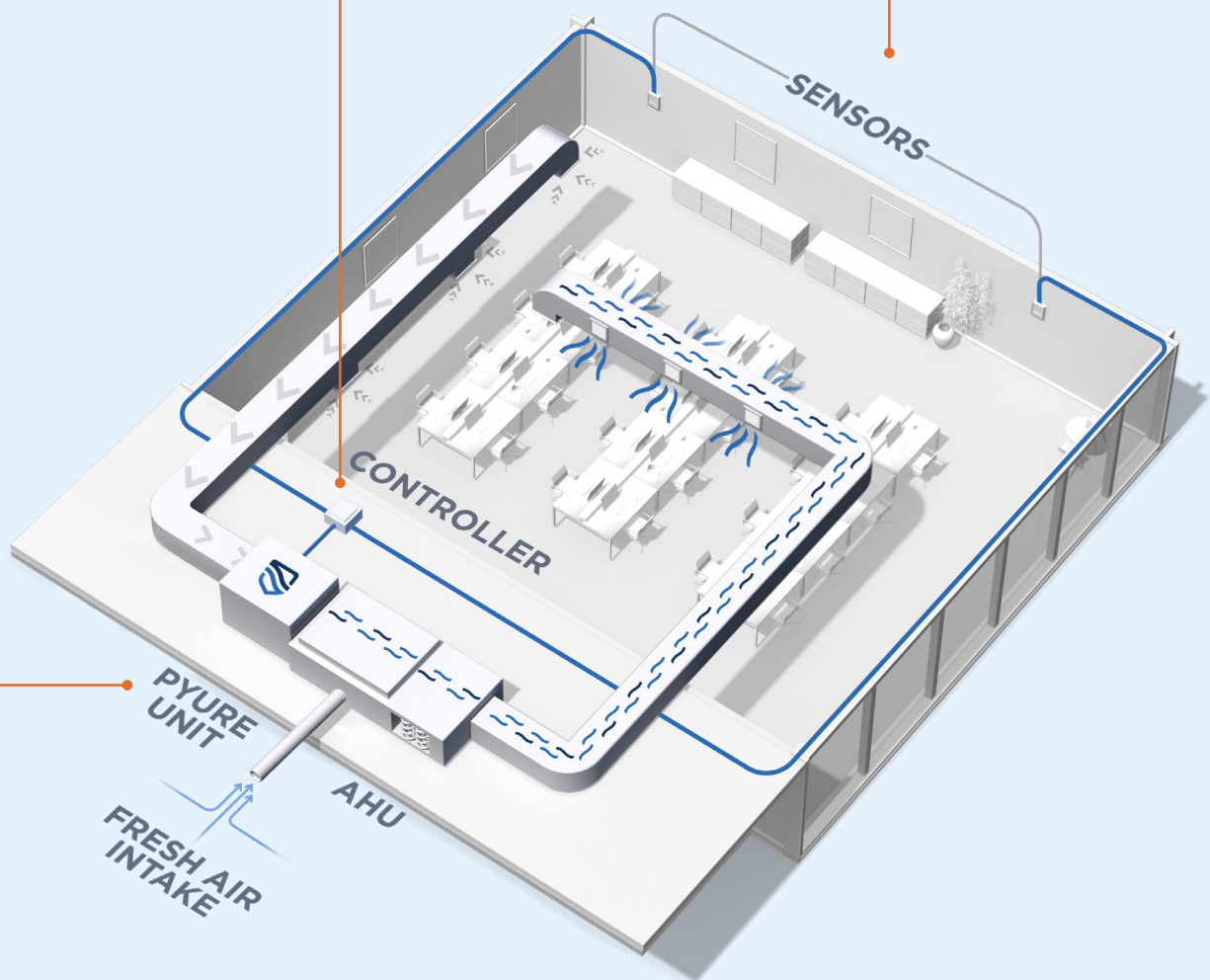


# Optimized air quality.

Our completely scalable and sensor driven systems offer customizable controls and helpful data analysis to measure and optimize performance. The Pyure system continuously adjusts as the demand for purification changes over time, ensuring optimal safety, performance, and energy efficiency.

Controller responds to sensor readings and modulates the Pyure device to treat the real-time air quality.

Sensors provide real-time reading to controller.



Pyure unit works with single or multiple air handling systems.

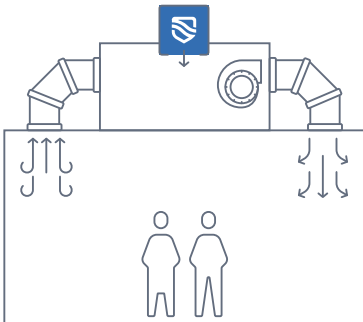


# Hassle free installation and upkeep.

Pyure solutions can be installed with or without an air handling system.

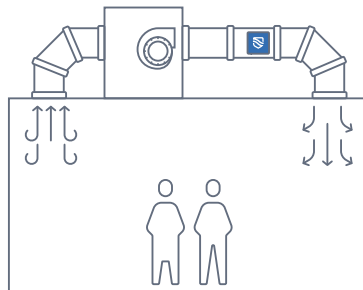
## Centralized air handling

- Large rooftop units
- Large indoor units



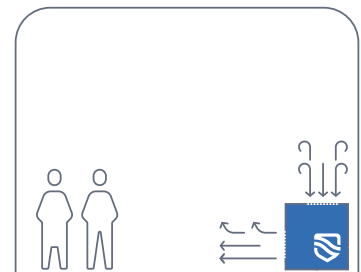
## Decentralized air handling

- Smaller units inserted in ducts throughout the building
- Wall mounted units where there is no ductwork



## No or limited air handling

- Large stand alone units with blowers
- Portable, stand alone units
- Wall mounted units



**Pyure makes maintenance easier.**

## Little impact on existing air handling system

- Minimal increase in airflow resistance
- Virtually no extra wear and tear
- Marginal impact on energy consumption

## Low frequency maintenance and a system that helps clean

- Annual replacement of UV optics and sensors
- Periodic cleaning of filters (frequency depends on the dust and oil concentrations in the air)
- Reduces the frequency and intensity of duct decontamination



# Controlled solutions.

Designed to treat even the largest of spaces, our controlled solutions work with new and existing air-handling systems. Sensor-driven with customized controls that respond to real-time data.



## Pyure IDI™ Purifier

A versatile solution that fits into the ductwork of any air handling system. Connect with more IDI units to increase the treatment area.

**TYPE:** Indoor, inline with HVAC

**NOMINAL TREATMENT AREA:** 3,000\* sq ft



## Pyure MVP16™ Purifier

Integrates into a new or existing air-handling system where space is limited and provides more cleansing power than induct systems.

**TYPE:** Indoor, inline with HVAC

**NOMINAL TREATMENT AREA:** up to 85,000\* sq ft

**BLOWER:** optional



## Pyure MVP24™ Purifier

A heavy-duty unit built with a reinforced shell suitable for outdoor applications.

**TYPE:** Rooftop, inline with HVAC

**NOMINAL TREATMENT AREA:** up to 200,000\* sq ft

**BLOWER:** optional



## Pyure MVP48™ Purifier

Our most powerful system, the MVP48™ purifier is ideal for the largest installations.

**TYPE:** Indoor, inline with HVAC

**NOMINAL TREATMENT AREA:** up to 450,000\* sq ft

**BLOWER:** optional



## Insight™ Edge Controllers

Controllers modulate purifiers based on feedback from the sensor system, creating an efficient method of treating pollutants in the space.



## Sensor system

Air sensors placed throughout the environment send readings to the sensor system which provides constant real-time feedback to the control system.

# Non-controlled solutions.

The simplest to install, our non-controlled products can be added to air ducts, wall mounted or plugged into a standard outlet. Switch them on for instant air purification and surface cleaning in small to medium size environments.



## Pyure Mini® Purifier

The Mini series is designed to fit in with its small proportions, modern design and low noise levels. This makes it ideal for cleaning and deodorizing air in offices, waiting rooms or any other small commercial space.

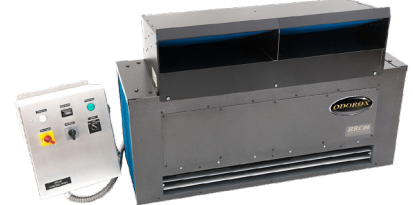
**TREATMENT AREA:** up to 500\* sq ft



## Pyure IDU™ Purifier

The IDU purifier is a duct mounted purifier that is easy to install and requires only an electrical connection for operation.

**NOMINAL TREATMENT AREA:**  
2,000\* sq ft (model dependant)



## Odorox® HRC06™ Air Purifier

The HRC06 purifier is wall mounted and can modulate its output to purify and deodorize commercial and industrial applications.

**TREATMENT AREA:** up to 6,600\* sq ft



## Odorox® Slimline™ Purifier Family

Rugged purifiers with a durable exterior beneficial for public spaces and commercial or industrial installations that require a portable unit.

**TREATMENT AREA:**  
up to 900 - 1,500\* sq ft



## Odorox® Boss™ Purifier

Designed for tough environments, the Boss purifier is suited to applications like remediation following fire or water damage. It's also ideal for areas with frequent movement and contact.

**TREATMENT AREA:** up to 2,500\* sq ft



## Odorox® Boss XL3™ Purifier

By adding an external fan to provide greater air movement, the Boss XL3 purifier is ideal for spaces that have been affected by smoke, flooding, wastewater, and other air pollutants.

**TREATMENT AREA:** up to 3,250\* sq ft

# Let's discuss a solution tailored to your needs or plan a trial.

At Pyure, we're dedicated to finding the right solution for solving your challenges and delivering the outcomes you need.

Get in touch to find out more about how we can help.

[sales@pyure.com](mailto:sales@pyure.com)  
**1-877-735-3701**



[pyure.com](https://pyure.com) | [@pyureco](https://twitter.com/pyureco)

Copyright 2025, The Pyure Company,  
Boynton Beach, FL 33426 USA  
Document# PYU00LB14A  
02/28/2025